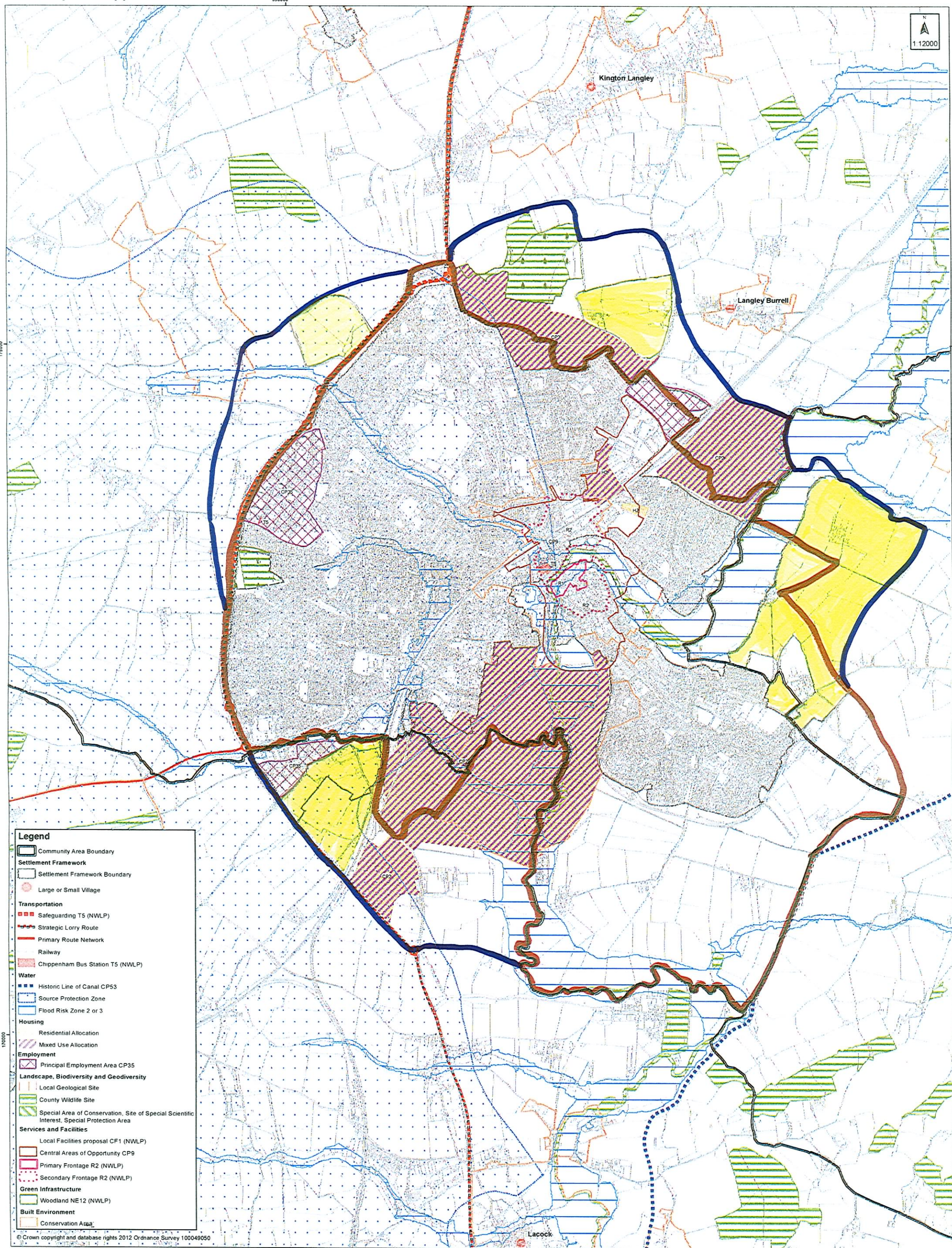


Inset Map 4: Chippenham



- Legend**
- Community Area Boundary
 - Settlement Framework**
 - Settlement Framework Boundary
 - Large or Small Village
 - Transportation**
 - Safeguarding T5 (NWLP)
 - Strategic Lorry Route
 - Primary Route Network
 - Railway
 - Chippenham Bus Station T5 (NWLP)
 - Water**
 - Historic Line of Canal CP53
 - Source Protection Zone
 - Flood Risk Zone 2 or 3
 - Housing**
 - Residential Allocation
 - Mixed Use Allocation
 - Employment**
 - Principal Employment Area CP35
 - Landscape, Biodiversity and Geodiversity**
 - Local Geological Site
 - County Wildlife Site
 - Special Area of Conservation, Site of Special Scientific Interest, Special Protection Area
 - Services and Facilities**
 - Local Facilities proposal CF1 (NWLP)
 - Central Areas of Opportunity CP9
 - Primary Frontage R2 (NWLP)
 - Secondary Frontage R2 (NWLP)
 - Green Infrastructure**
 - Woodland NE12 (NWLP)
 - Built Environment**
 - Conservation Area

© Crown copyright and database rights 2012 Ordnance Survey 100049050

Town Boundary

Recommended Changes